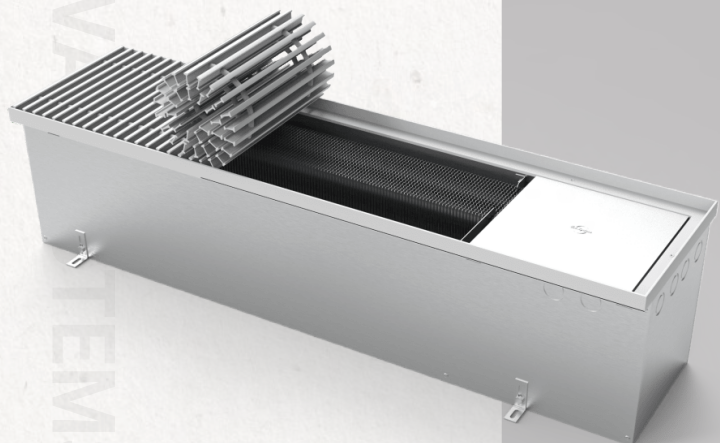




+7(800) 222-01-13

К.250.258 (КО)

Модель



К - конвектор с естественной конвекцией (без вентилятора)
О - конвектор с отводом для слива конденсата

250

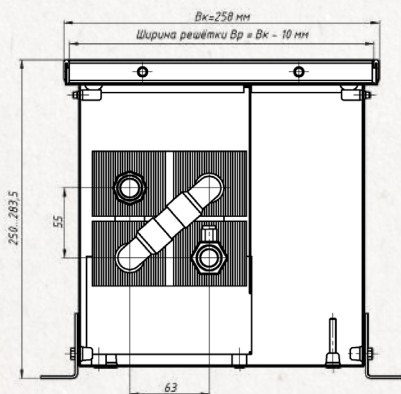
258

398 - 3624

Высота, мм.

Ширина, мм.

Теплоотдача, Вт.



Артикул	Длина	Вес, кг	Теплоотдача (95/85/20), Вт	Без решетки	Стоимость решетки	С решеткой и окантовкой
K.250.258.600.4TK	600	10,02	398	14522	4884	19406
K.250.258.650.4TK	650	10,70	465	15251	5291	20542
K.250.258.700.4TK	700	11,40	532	15979	5698	21677
K.250.258.750.4TK	750	12,08	598	16708	6105	22813
K.250.258.800.4TK	800	12,76	665	17550	6512	24062
K.250.258.850.4TK	850	13,46	732	18278	6919	25197
K.250.258.900.4TK	900	14,15	806	19007	7326	26333
K.250.258.950.4TK	950	14,85	866	19736	7733	27469
K.250.258.1000.4TK	1000	15,53	938	20492	8140	28632
K.250.258.1050.4TK	1050	16,23	1000	21221	8547	29768
K.250.258.1100.4TK	1100	16,91	1067	21950	8954	30904
K.250.258.1150.4TK	1150	17,60	1134	22678	9361	32039
K.250.258.1200.4TK	1200	18,37	1201	23407	9768	33175
K.250.258.1250.4TK	1250	19,06	1276	24136	10175	34311
K.250.258.1300.4TK	1300	19,76	1335	24864	10582	35446
K.250.258.1350.4TK	1350	20,44	1402	25593	10989	36582
K.250.258.1400.4TK	1400	21,14	1469	26322	11396	37718
K.250.258.1450.4TK	1450	21,82	1536	27050	11803	38853
K.250.258.1500.4TK	1500	22,69	1610	28437	12210	40647
K.250.258.1550.4TK	1550	23,37	1670	29166	12617	41783
K.250.258.1600.4TK	1600	24,05	1736	29894	13024	42918
K.250.258.1650.4TK	1650	24,75	1803	30623	13431	44054
K.250.258.1700.4TK	1700	25,44	1870	31351	13838	45189
K.250.258.1750.4TK	1750	26,13	1948	32080	14245	46325
K.250.258.1800.4TK	1800	26,82	2004	32809	14652	47461
K.250.258.1850.4TK	1850	27,52	2071	33537	15059	48596
K.250.258.1900.4TK	1900	28,20	2138	34266	15466	49732
K.250.258.1950.4TK	1950	28,96	2205	34995	15873	50868
K.250.258.2000.4TK	2000	29,75	2216	35903	16280	52183
K.250.258.2050.4TK	2050	30,44	2339	36632	16687	53319
K.250.258.2100.4TK	2100	31,14	2406	37361	17094	54455
K.250.258.2150.4TK	2150	31,82	2473	38089	17501	55590
K.250.258.2200.4TK	2200	32,52	2540	38818	17908	56726
K.250.258.2250.4TK	2250	33,20	2585	39547	18315	57862
K.250.258.2300.4TK	2300	33,88	2674	40275	18722	58997
K.250.258.2350.4TK	2350	34,58	2741	41004	19129	60133
K.250.258.2400.4TK	2400	35,27	2807	41733	19536	61269
K.250.258.2450.4TK	2450	36,13	2874	42461	19943	62404
K.250.258.2500.4TK	2500	36,81	2954	43848	20350	64198
K.250.258.2550.4TK	2550	37,51	3008	44690	20757	65447
K.250.258.2600.4TK	2600	38,20	3075	45418	21164	66582
K.250.258.2650.4TK	2650	38,90	3142	46147	21571	67718
K.250.258.2700.4TK	2700	39,66	3209	46876	21978	68854
K.250.258.2750.4TK	2750	40,34	3290	47604	22385	69989
K.250.258.2800.4TK	2800	41,04	3343	48333	22792	71125
K.250.258.2850.4TK	2850	41,72	3410	49062	23199	72261
K.250.258.2900.4TK	2900	42,42	3477	49790	23606	73396
K.250.258.2950.4TK	2950	43,11	3544	50519	24013	74532
K.250.258.3000.4TK	3000	43,81	3624	51386	24420	75806